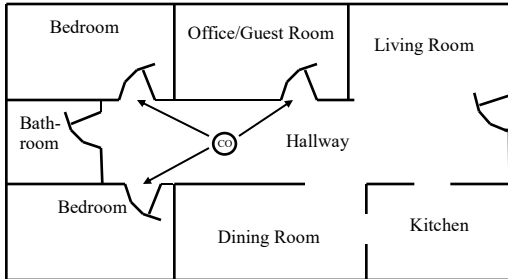




# City of Albany

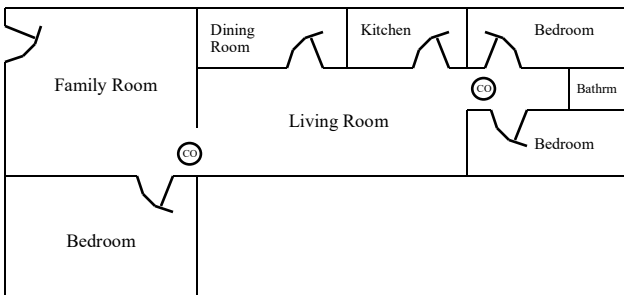
## Residential Carbon Monoxide Alarms

Figure 1



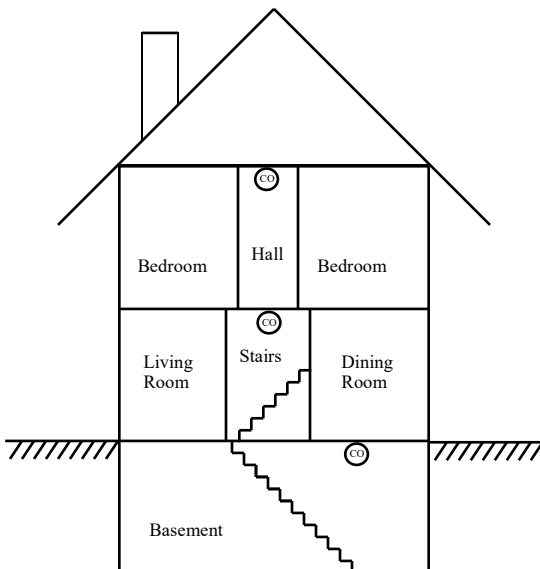
Typical Placement Within Residence

Figure 2



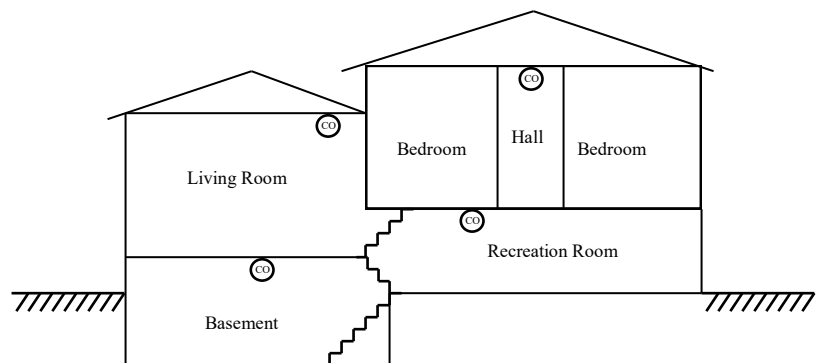
Placement Within Residence Where Bedrooms are in Different Areas

Figure 3



Typical Placement - Multistory Dwelling

Figure 4



Typical Placement - Split-Level Dwelling

### Single-Family and Multifamily Dwelling Requirements

#### Carbon monoxide alarms are required:

- 1) In every dwelling unit containing a fireplace or fuel-fired appliance;
- 2) In every dwelling unit with an attached garage with an opening (e.g., door) to the dwelling unit.

#### Carbon monoxide alarm placement:

- A) Outside of each sleeping room in the immediate vicinity of the sleeping room (see Figures 1 & 2);
- B) On every occupiable level of a dwelling unit, including basements (see Figures 3 & 4);
- C) In sleeping rooms, where a fuel-burning appliance is located in the sleeping room or its attached bathroom (see Figure 5).

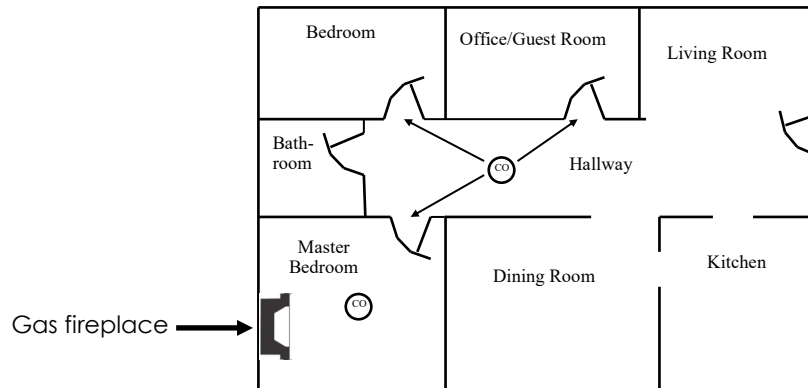
Applicable Codes: California Health & Safety Code § 17926(a); 2016 California Residential Code § R315; 2016 California Building Code § 915; 2016 California Fire Code § 915. **Refer to applicable codes for additional requirements.**



# City of Albany

## Residential Carbon Monoxide Alarms

Figure 5



**Requirement where fuel-burning appliance located within sleeping room or adjoining bathroom.**

**\*\*Always install carbon monoxide detectors according to the manufacturer's instructions.\*\***

Refer to the manual included with the unit.

For more information, call the City of Albany's Community Development Department at (510) 528-5760 or Fire Prevention Bureau at (510) 528-5775.

**NOTE:** All carbon monoxide alarms installed must be approved by the California Office of the State Fire Marshal (OSFM). Listings can be found here: [http://osfm.fire.ca.gov/strucfireengineer/pdf/bml/List\\_CSFM\\_Approved.pdf](http://osfm.fire.ca.gov/strucfireengineer/pdf/bml/List_CSFM_Approved.pdf)